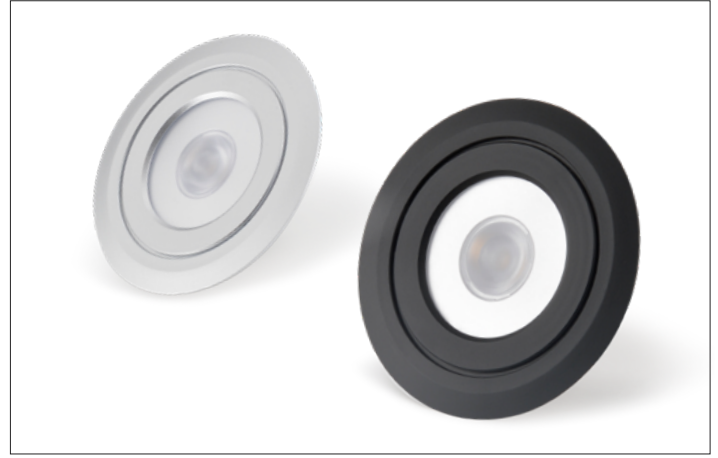


DATE PROJECT LOCATION TYPE



PRODUCT FEATURES

- Ultra Slim Profile
- Single Diode Provides Single Crisp Image
- Linkable Units (Link up to 7 units together)
- White, Silver, and Black Trim Finishes Available
- Side Exit Leads
- Millwork, Recessed or Surface Mount
- Dim using FDC-L10

PRODUCT SPECIFICATIONS

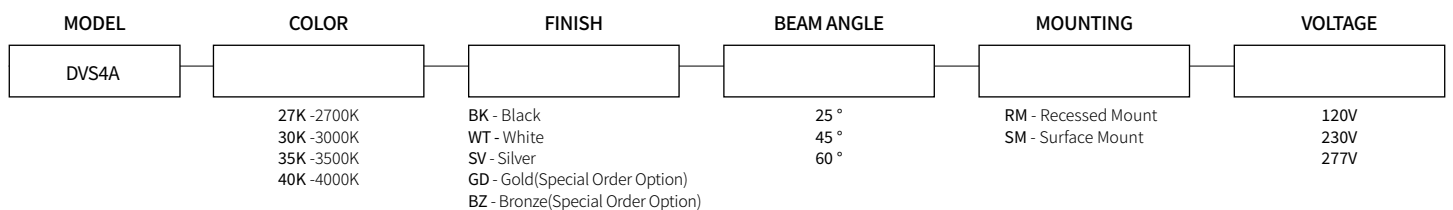
Power Input	24VDC Constant Voltage Feelux or Class 2 Drivers
Color Rendering Index	Ra>90
Available CCTs	2700K, 3000K, 3500K, 4000K
Energy Efficiency	LED 100 lm/W, Luminaire 100lm/W
Operating Temperature Ranges	0-45°C (32-113°F)
Dim with Feelux Interface	PWM/0-10V/DALI/DMX512/WIRELESS
Material	Aluminum
Beam Angle	25°, 45°, 60°
Lamp Life	50,000hr / 70%
Warranty	5 year
Product is approved for Closet / Storage space installation per NEC410.16 (A) (3) and NEC410.16 (C)(5) per NRTL certification	

SPECIFICATION



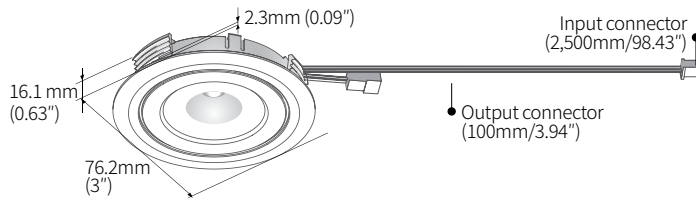
Model Name	Color	Power Input	Lamp Power	Luminous Flux	Luminous Efficacy	Color Rendering Index	CCT	Beam Angle	Operating Temperature
DVS4A 40K-24V-WT-25	White Black Silver	DC 24V	4.5 W	487 lm	108 lm/w	Ra > 90	2700K/3000K/3500K/4000K	25°	0 ~ 45°C
DVS4A 40K-24V-WT-45		DC 24V	4.6 W	502 lm	109 lm/w	Ra > 90	2700K/3000K/3500K/4000K	45°	0 ~ 45°C
DVS4A 40K-24V-WT-60		DC 24V	4.6 W	493 lm	107 lm/w	Ra > 90	2700K/3000K/3500K/4000K	60°	0 ~ 45°C

SPECIFICATION GUIDE

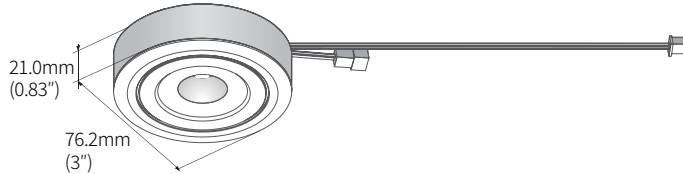


DIMENSION

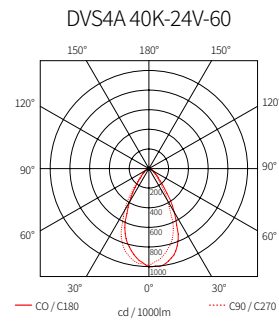
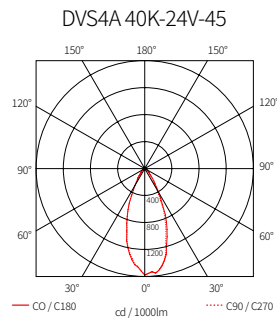
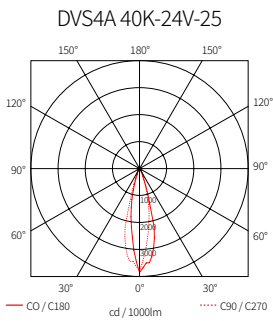
*Linkable



*Surface mount ring

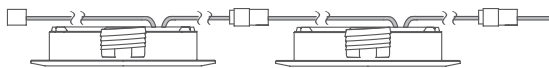


BEAM SPREADS

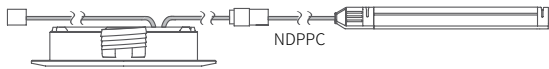


INSTALLATION

FLX Spot DVS & FLX Spot DVS



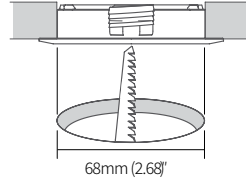
FLX Spot DVS & FLX Stix NDP



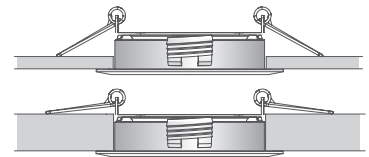
FLX Stix NDP & FLX Spot DVS



Hole Diameter



Mounting spring installation



★ Linkabel between FLX Spot DVS and FLX Spot DVS
(Max. 7 units connectable in a row/LED Driver)

COMPONENTS



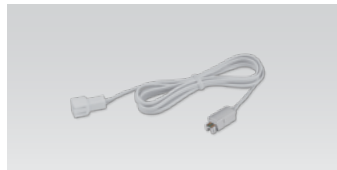
FLX Spot DVS

- __DVS4A 40K-24V-WT
- __DVS4A 40K-24V-BK
- __DVS4A 40K-24V-SV



Extension cable

- __DVSPTC (2,500mm/98.43")



Connecting cable

- __NDPDVSPTC(1,000mm/39.37")



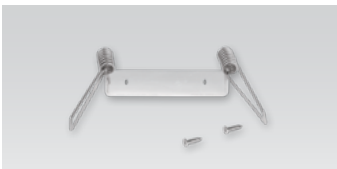
Connecting cable

- __NDVPC (2,500mm/98.43")



Connecting cable

- __NDPPC (2,500mm/98.43")



Mounting spring

- __DVS spring



Surface mount ring

- __DVS MR-WT
- __DVS MR-BK
- __DVS MR-SV



Deco Ring

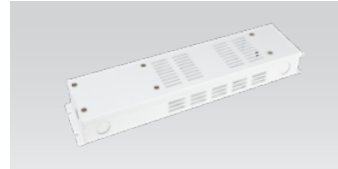
- __DVS DR-WT
- __DVS DR-BK
- __DVS DR-SV

A larger selection of drivers are available including remote and hard wire drivers. Please consult factory.



12 Port Hub

- __D12P-HUB
- Included with Cord and Plug drivers. Order separately for Hard Wire or 3rd Party Drivers



Driver Junction Box

- __MHWB-FLE



LED Drivers

- __FLC30-24V/XL *
 - __FLC75-24V/XL *
- With distributor and power cord 1800mm (6')



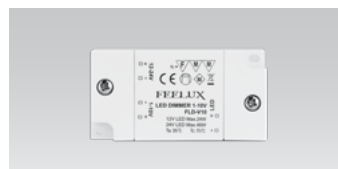
Hard Wire Driver

- __XLD200-224V-FCL-DIM
 - __XLD75-124V-FC
- (90V to 300V)



Dimming Interface (0-10V/1-10V)

- __FDD-L20



Dimming Interface (100W/CH, 1CH) 0-10V Signal

- __FDC-L10 (Max. 100W)

*Required for Dim 0-10V, DALI



Dimming Interface (DALI)

- __FDD-L1DA



Dimming Interface (DMX512)

- __FDA-L2MO
- (0-10V/1-10V, DMX512)
Max. 200W (100W/CH, 2CH)



Dimming Interface (Zigbee)_FDD-L2Z

- __FDD-L2Z



Wireless Control (Zigbee Switch)

- __FSM-Z1