



PRODUCT FEATURES

- Ultra Slim Profile
- Single Diode Provides Single Crisp Image / Eliminates Multiple Imaging
- Linkable Units
- White, Silver, and Black Trim Finishes Available
- Millwork, Recessed or Surface Mount
- Dimmable with Accessories: 0-10V or Phase
- Quick Ship*

PRODUCT SPECIFICATIONS

- Voltage: 24VDC Constant Voltage Feelux or Approved Driver
- Operating Temperature: 32-113°F (0-45°C)
- Lamp Life: 50,000 hrs / 70%
- Available Color: 2700K, 3000K, 3500K, 4000K
- CRI/Ra > 85
- Efficiency: 80lm/W - 4.3W - 344lm
- IP20 – Damp Location/Closet Approved
- Beam Angle: 60°
- Finish: White, Silver, Black, Gold
- 5 year Warranty

* Pending factory availability

SPECIFICATION DIAGRAM



DRIVER OPTIONS

**Option 1:
Cord & Plug /Feelux Drivers**



FLC (30 or 75) 24V/XL

**Option 2:
Hardwire / Feelux Driver**



XLAV80(L)-124V-SSB
XLD200-224V-FCL-DIM
XLD75-124V-FC

NOTE: Options 2 & 3 require low voltage wire to be provided by EC

**Option 3:
3rd Party Drivers**

3rd party drivers are available to 600W. Please consult factory.

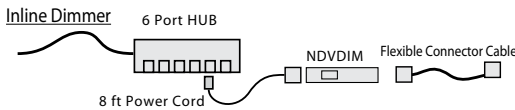


CONTROLS OPTIONS

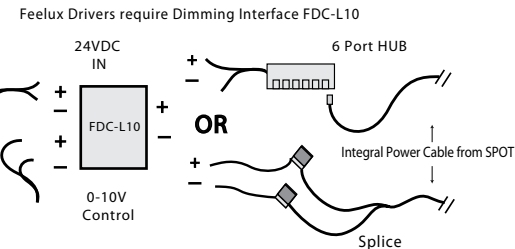
Non-Dimming Options:



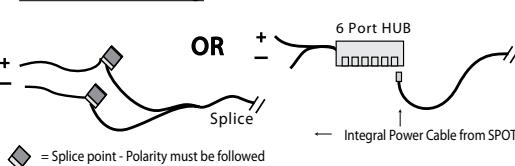
Dimming Options:



Dimming Interface 0-10V



Forward Phase Dimming



FIXTURE OPTIONS

Connect Linkable Spot DVS(A)



Connect Linkable Spot DVS(A) to NDP



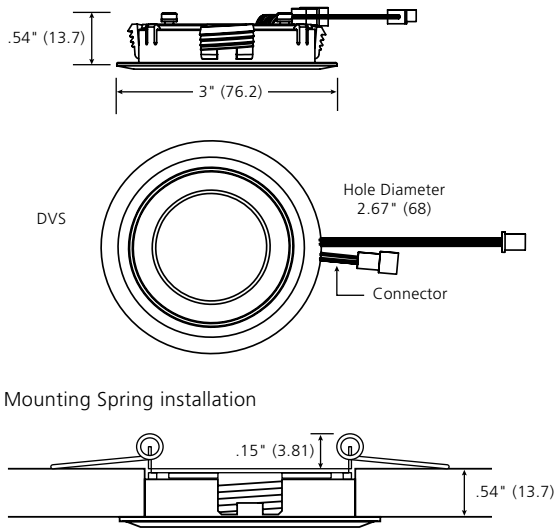
Connect NDP to Linkable Spot DVS(A)



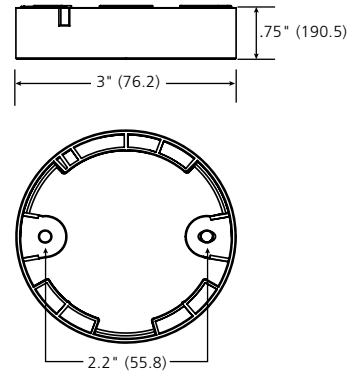
**MAX 7 Linkable Units On Single Power Feed
Drivers Can Support Multiple Power Feeds
TOTAL CONNECTED LOAD
SHOULD NOT EXCEED DRIVER WATTS!**

FIXTURE AND ACCESSORY DIMENSIONS

RECESSED MOUNTING

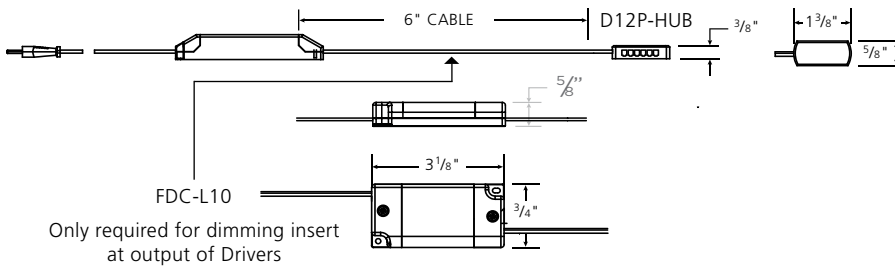


SURFACE MOUNTING

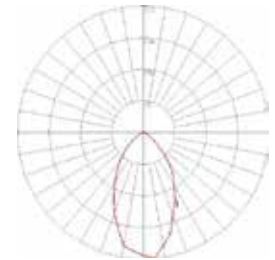


DIMMING OPTIONS

LED DRIVER



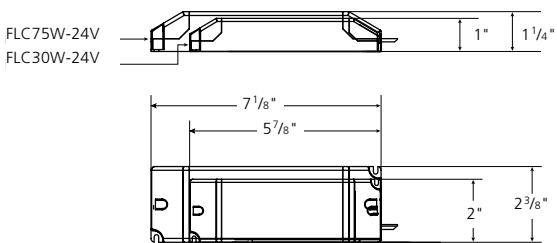
BEAM SPREAD



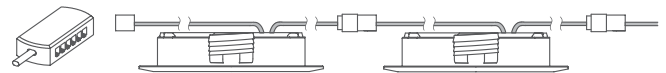
DVS 4W 4000K (349.8lm (Lamp), 302.8cd (Max intensity), 4W (Power))

DRIVER OPTIONS

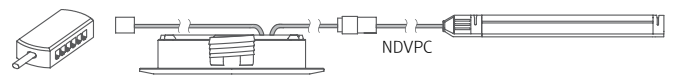
FLC PLUG-IN DRIVER SIZES



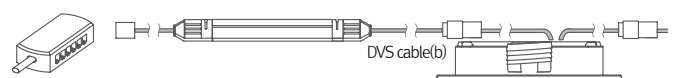
Linkable between FLX Spot DVS and FLX Spot DVS



Linkable between FLX Spot DVS and FLX Stix NDP



Linkable between FLX Stix NDP and FLX Spot DVS



COLORS



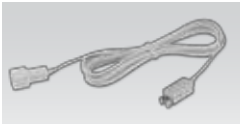
COMPONENTS



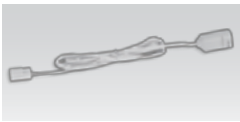
- Linkable Type**
- ___ DVS4A-(color)K-24V-WT
 - ___ DVS4A-(color)K-24V-BK
 - ___ DVS4A-(color)K-24V-SV



- Extension Cable**
- ___ DVSPTC (98.43")



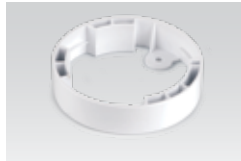
- Connecting Cable**
- ___ NDPDVSPTC (39.37")



- Connecting Cord (8')**
- ___ NDPPC (98.43")



- Mounting Spring**
- ___ DVS-SPRING



- Surface Mount**
- ___ DVS-SR-WT
 - ___ DVS-SR-BK
 - ___ DVS-SR-SV
 - ___ DVS-SR-GD



- Deco Ring**
- ___ DVS-DR-WT
 - ___ DVS-DR-BK
 - ___ DVS-DR-SV
 - ___ DVS-DR-GD

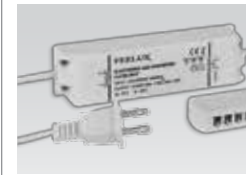


- In-Line Dimmer**
- ___ NDP-DIM

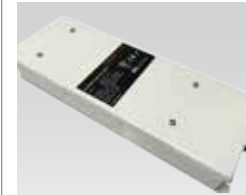


- Dimming Interface**
- Max. 100W (100W/CH, 1CH)
 - 0 -10V Signal
 - ___ FDC-L10

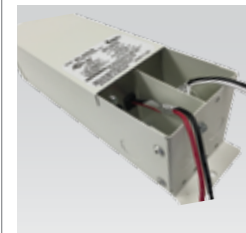
A larger selection of drivers are available including remote and hard wire drivers. Please consult factory.



- LED Drivers**
- with distributor and power cord (1800mm)
 - ___ FLC30-24V/XL
 - ___ FLC75-24V/XL



- Hard Wire Driver**
- (90V to 300V)
 - ___ XLAV80(L)-124V-SSB
 - ___ XLD200-224V-FCL-DIM
 - ___ XLD75-124V-FC



- Justin Drivers**
- ___ 481-24DCR
 - ___ 483-24DCR-277
 - ___ 961-24DCR
 - ___ 963-24DCR-277
 - ___ C2240-24DCR
 - ___ C2240-24DCR-277



- 12 Port Hub**
- ___ D12P-HUB
 - Included with Cord and Plug drivers. Order separately for Hard Wire or 3rd Party Drivers

SPECIFICATION GUIDE: NOT TO BE USED FOR ORDERING. The Specification Guide is intended solely to ensure that all options are considered.

MODEL	COLOR	LENS	MOUNTING	TRIM/COLOR	QUANTITY	DRIVER	CONTROLS	VOLTAGE
DVS4								
DVS4A-Linkable	27K -2700K 30K -3000K 40K -4000K	ST -Flat Frosted	RM - Recessed Mount SP- Spring Mount SR- Surface Mount	WT -White BK -Black SV -Silver GD- Gold	Spot quantity powered together	CP - Cable/Plug HW - Hard Wire TD - 3rd Party Drivers Consult Factory	NDM Non-Dim IDM Inline Dim FDC 0-10V Interface FPH Forward Phase RPH Reverse Phase	100V 120V 230V 277V