

PRODUCT FEATURES

- Line Voltage 100-120V – No Driver Required
- Easy and Quick Snap Connection
- Innovative Slim Design
- Seamless and Spot Free

Release

2020 : 220 – 240V for Global Applications
 2021 : 120V, 277V for North American Applications

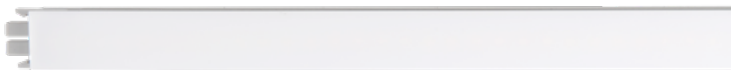
PRODUCT SPECIFICATIONS

- Voltage : AC 100-120V
- Operating Temperature : 32-113°F (0-45°C)
- Lamp Life : 55,000hr / 70%
- Available Color : 2700K, 3000K, 3500K, 4000K
- Color Rendering : CRI>90
- 5 year warranty

MAX. CONNECTION

- 400W in one row (single power feed)

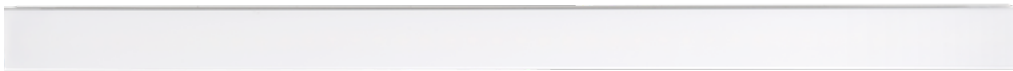
DIMENSIONS



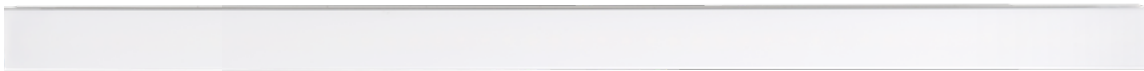
NDF3 / FLX Stix NDFree 3W length 6.1" (156mm)



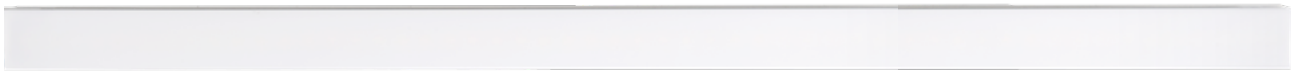
NDF5 / FLX Stix NDFree 5W length 11.5" (291.5mm)



NDF10 / FLX Stix NDFree 10W length 22.4" (569.5mm)



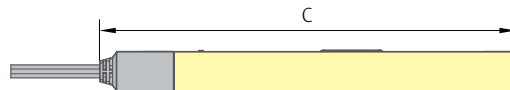
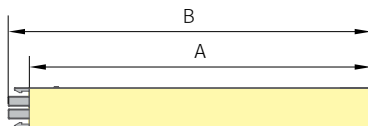
NDF15 / FLX Stix NDFree 15W length 33.4" (848mm)



NDF20 / FLX Stix NDFree 20W length 44.3" (1,126mm)

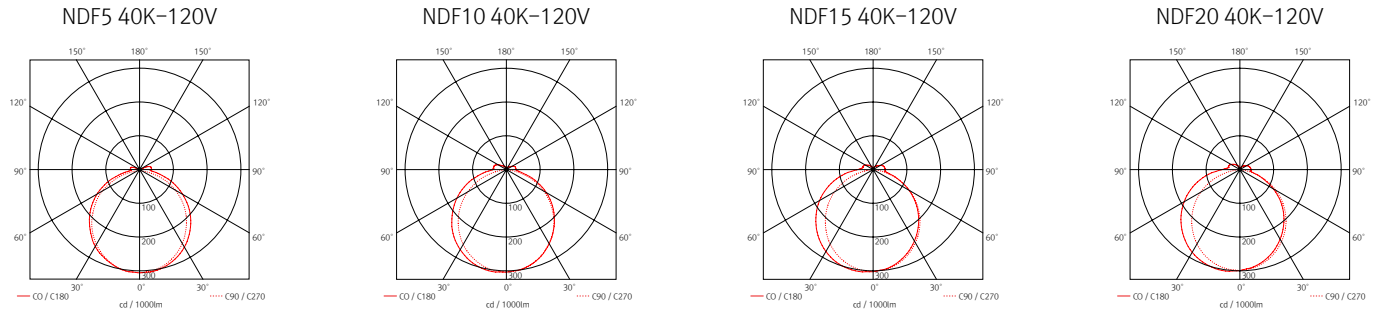


Model Number	Voltage Input (V)	Lamp Power (W)	Lumens(lm) (CRI90)	A inches (mm)	B inches (mm)	C inches (mm)	D inches (mm)	E inches (mm)	F inches (mm)	G inches (mm)
NDF3-(Color)K-120V-C90	AC 100-120V	2.5	212	5.8 (147)	6.1 (156)	7 (178.7)	0.75 (19)	0.71 (18)	0.71 (18)	0.66 (16.8)
NDF5-(Color)K-120V-C90	AC 100-120V	5.34	340	11.1 (282.5)	11.5 (291.5)	12.4 (314)	0.75 (19)	0.71 (18)	0.71 (18)	0.66 (16.8)
NDF10-(Color)K-120V-C90	AC 100-120V	10.93	720	22 (560.5)	22.4 (569.5)	23.3 (592)	0.75 (19)	0.71 (18)	0.71 (18)	0.66 (16.8)
NDF15-(Color)K-120V-C90	AC 100-120V	16.08	1,080	33 (839)	33.4 (848)	34.3 (870.5)	0.75 (19)	0.71 (18)	0.71 (18)	0.66 (16.8)
NDF20-(Color)K-120V-C90	AC 100-120V	21.3	1,440	43.4 (1,117)	44.3 (1,126)	45.2 (1,148.5)	0.75 (19)	0.71 (18)	0.71 (18)	0.66 (16.8)

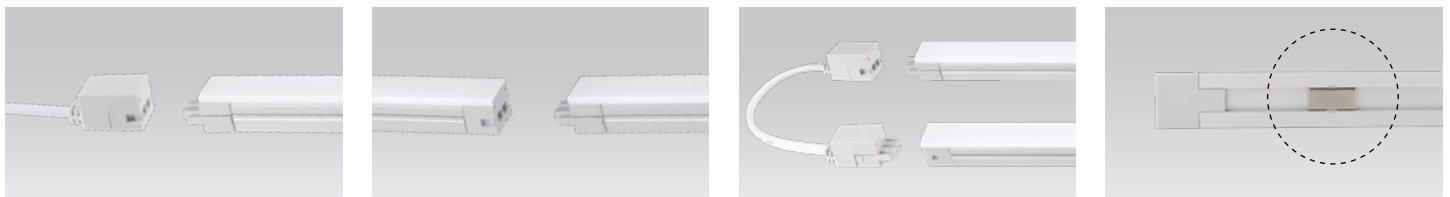


w/bracket

BEAM SPREADS



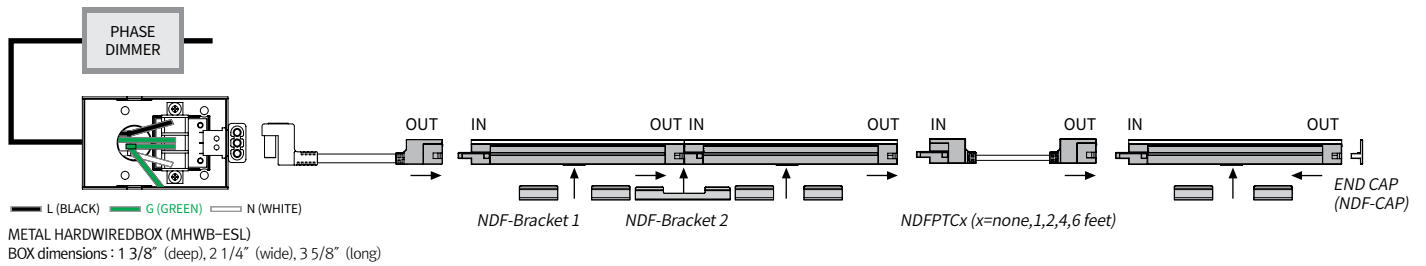
EASY CONECTION



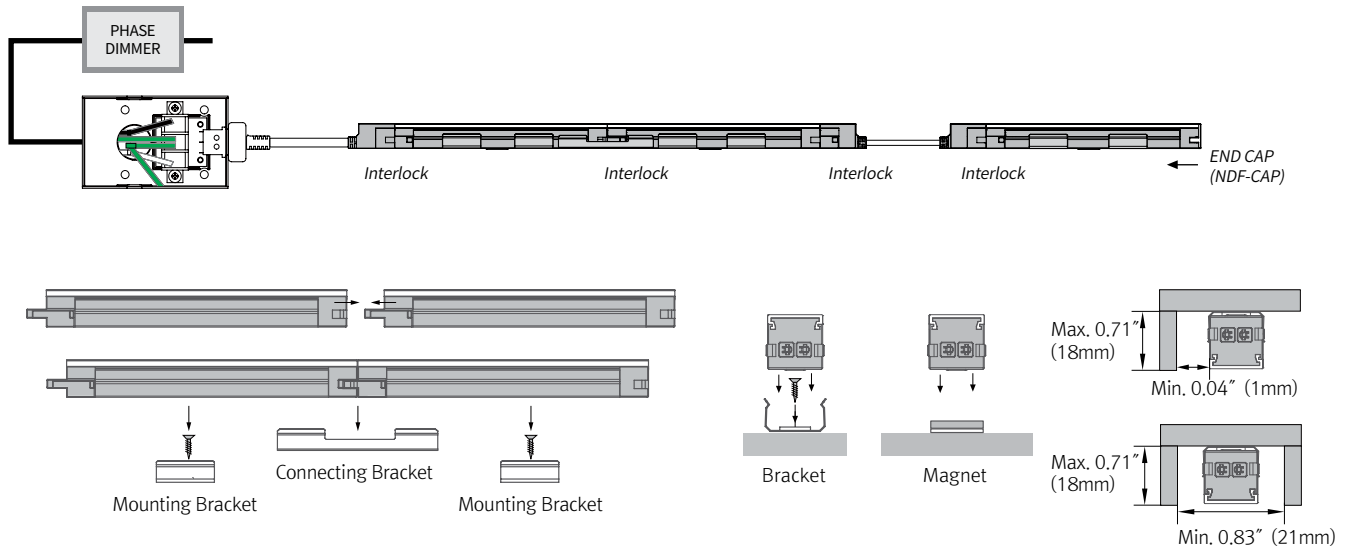
MAGNET

INSTALLATION

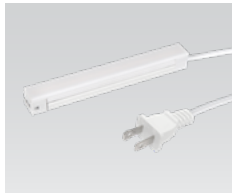
☆Before Installation(Power Connection)



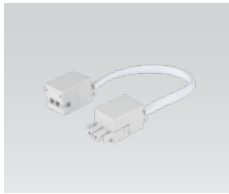
☆After Installation



COMPONENTS



LED Power connector
 __NDF3-(Color)K-120V-PC
 NDF3 (5.8") fixture with
 6' power cord



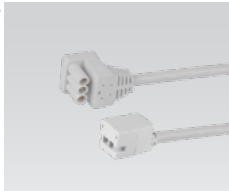
Connecting Cable
 __NDFPTC/XL (6")
 __NDFPTC1/XL (1')
 __NDFPTC2/XL (2')
 __NDFPTC4/XL (4')
 __NDFPTC6/XL (6')



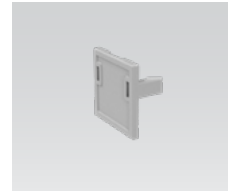
Connecting bracket
 __NDF-BRACKET3
 Included with fixture



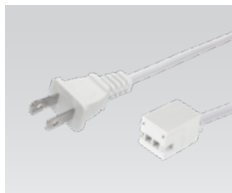
LED open power connector
 __NDF3-(Color)K-120V-OPC
 NDF3 (5.8") fixture with
 6' open power cord



Interface Cable
 __ESLNDFPTC/XL (6")
 __ESLNDFPTC1/XL (1')
 __ESLNDFPTC2/XL (2')
 __ESLNDFPTC4/XL (4')
 __ESLNDFPTC6/XL (6')



End Cap
 __NDF-CAP
 Included with fixture



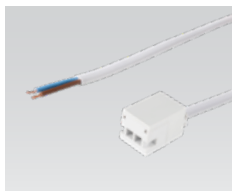
Power Cord
 __NDFPC/XL (6')



Mounting Bracket
 __NDF-BRACKET1
 Included with fixture



Hard Wire Box
 __MHWB-ESL



Open Power Cord
 __NDFOPC/XL (6')



Angle bracket
 __NDF-BRACKET2