

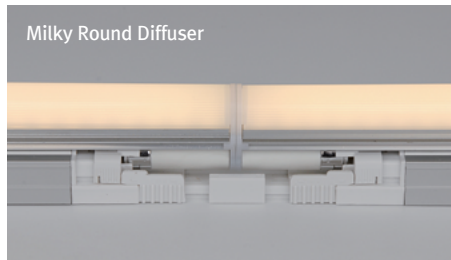
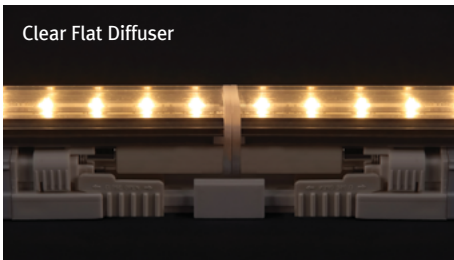
PRODUCT FEATURES

- Seamless Illumination
- Multiple LED Lamp Lens Options
- Removable LED Lamp for Quick Maintenance
- Line Voltage Integral Driver
- Dimming with Accessories: 0-10V
- Easy Plug-&-Play Installation
- Quick Ship*

PRODUCT SPECIFICATIONS

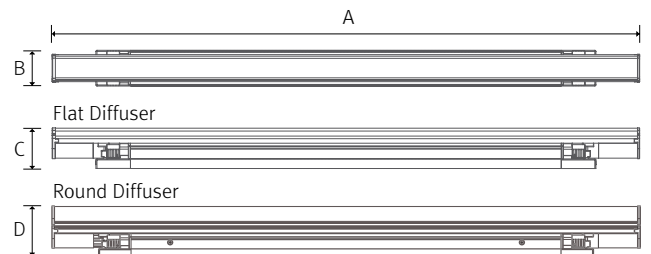
- Voltage: AC 120-230V
For 277V Refer to Factory for M20 Series
- Operating Temperature: 32-113° F (0-45° C)
- Lamp Life: 50,000 hrs
- Available Color: 2700K, 3000K, 3500K, 4000K, 6000K*
- CRI/Ra>85
- Energy Efficiency: 109lm/W – 574lm/ft
- Degree of Protection IP20
- Optics: 120° or 220° Distribution
- Powder Coated Finish –Silver
- 5 year warranty
- Max Connection per Single Power Feed
 - Dimming : 20pcs Max
 - Non-Dimming : 400W
10W(40pcs), 15W(26pcs), 20W(20pcs)

*Pending factory availability

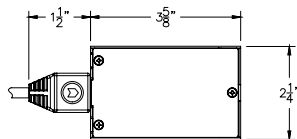
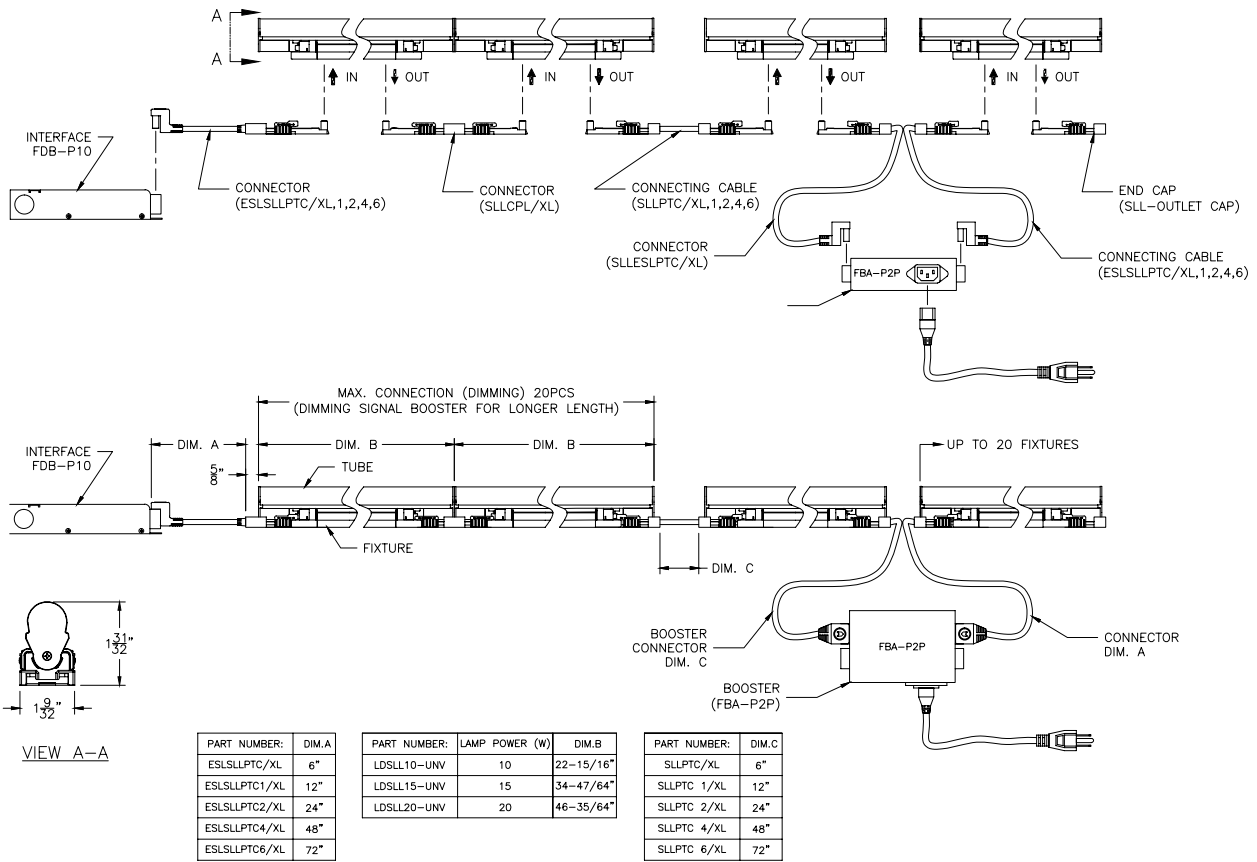


DIMENSIONS

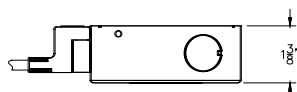
Model Number	Voltage Input (V)	Power Input (W)	A inches (mm)	B inches (mm)	C inches (mm)	D inches (mm)
LFBL10-UNV	AC 120-230	10	22.95 (583)	1.3 (33)	1.5 (38)	1.97 (50)
LFBL15-UNV	AC 120-230	15	37.75 (883)	1.3 (33)	1.5 (38)	1.97 (50)
LFBL20-UNV	AC 120-230	20	46.55 (1,183)	1.3 (33)	1.5 (38)	1.97 (50)



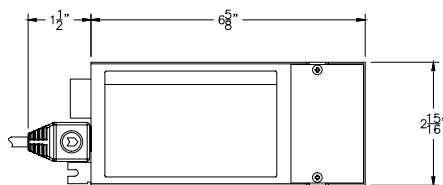
FIXTURES AND ACCESSORIES DIMENSIONS



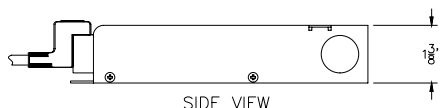
TOP VIEW
METAL HARD WIRE BOX: MHWB-ESL



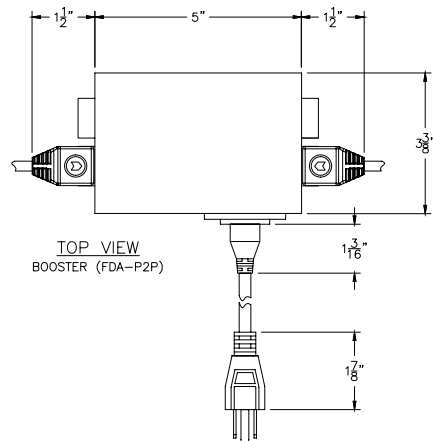
SIDE VIEW
METAL HARD WIRE BOX: MHWB-ESL



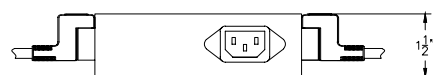
TOP VIEW
INTERFACE (FDB-P10 0-10V, 1-10V)
INTERFACE (FDB-P1H PHASE TO PWM TRANSLATOR)



SIDE VIEW

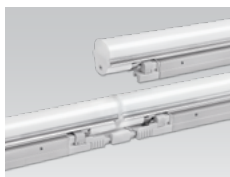


TOP VIEW
BOOSTER (FDA-P2P)



SIDE VIEW
BOOSTER (FDA-P2P)

COMPONENTS



Power cable

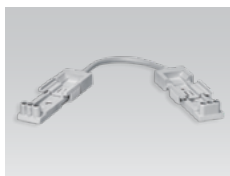
- _ LDSLL10-UNV
- _ LDSLL15-UNV
- _ LDSLL20-UNV



Connecting Cable

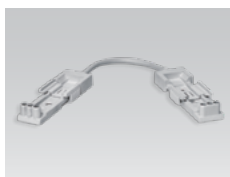
- _ LFBL10-(color)K-FC
- _ LFBL15-(color)K-FC
- _ LFBL20-(color)K-FC

- _ LFBL10-(color)K-RM
- _ LFBL15-(color)K-RM
- _ LFBL20-(color)K-RM



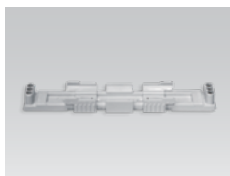
Connecting Cable

- _ SLLPTC/XL 6"
- _ SLLPTC1/XL 1'
- _ SLLPTC2/XL 2'
- _ SLLPTC4/XL 4'
- _ SLLPTC6/XL 6'



Connector to Booster

- _ SLLESLPTC/XL 6"
- _ SLLESLPTC1/XL 1'
- _ SLLESLPTC2/XL 2'
- _ SLLESLPTC4/XL 4'
- _ SLLESLPTC6/XL 6'



Direct Connector

- _ SLLCPL/XL



Connecting Cable

- _ ESLSLLPTC/XL 6"
- _ ESLSLLPTC1/XL 1'
- _ ESLSLLPTC2/XL 2'
- _ ESLSLLPTC4/XL 4'
- _ ESLSLLPTC6/XL 6'



Hard Wire Box

- _ MHWB-ESL



End Cap

- _ NDP-CAP
- Included with fixture



2 Channel Booster / 10Pcsea.

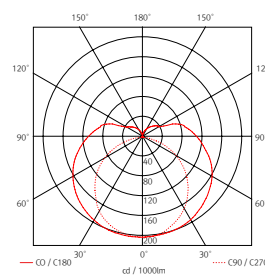
- _ FDB-P10
- 0-10V/1-10V to PWM



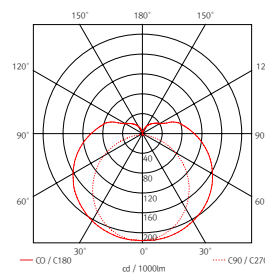
Mounting Brackets

- _ MSLL-bracket (A)
 - _ MSLL-bracket (B)
- Included with fixture

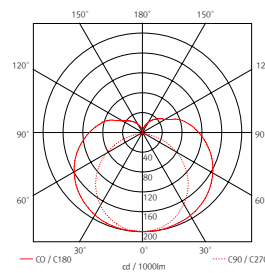
BEAM SPREADS



LFBL10-40K-UNV-RM - 1062.1lm
218cd (Max intensity), 10W (Power)



LFBL15-40K-UNV-RM - 1671.3lm
343cd (Max intensity), 15W (Power)



LFBL20-40K-UNV-RM - 2228.5lm
450cd (Max intensity), 15W (Power)

SPECIFICATION GUIDE

NOT TO BE USED FOR ORDERING. The Specification Guide is intended solely to ensure that all options are considered.

MODEL	COLOR	LENS	MOUNTING	CONFIGURATION	RUN LENGTH	POWER/DIM	VOLTAGE
LFBL					ft.		
LFBL	27K -2700K 30K -3000K 35K -3500K 40K -4000K 60K -6000K*	FC Flat Clear RM Round Milky	STD Flat Brackets Included BK1 Sliding Brackets	S -Straight V -Varies*	RUN LENGTH IN FEET Fill out for every run section *DRAWINGS AND RUN LENGTH REQUIRED	CP - Cable/Plug HW - Hard Wire ZT - 0-10V Interface	120-230V