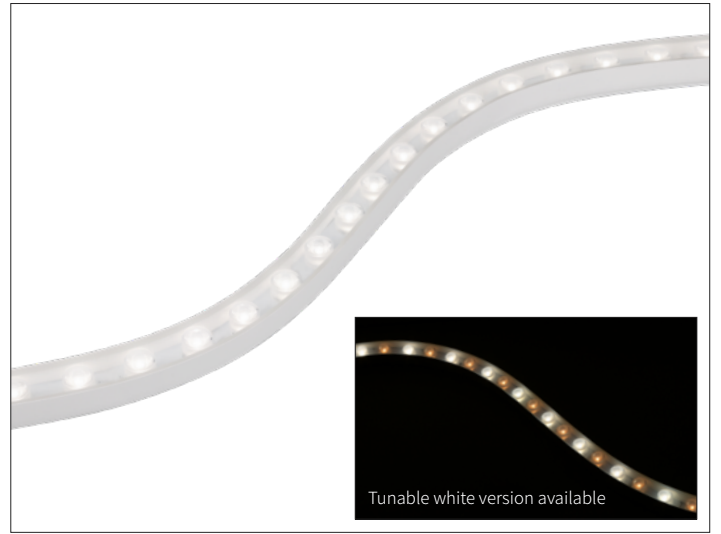


DATE PROJECT TYPE



## PRODUCT FEATURES

- Flexible luminaire with optics.
- Bending direction both horizontally and vertically.
- IP 67 rating for outdoor and indoor application
- 90+ CRI Standard
- Various beam angles (20°, 35°, 45°, 20°x 40°)
- Field-cutttable 55.4mm (2.18")
- 19W per meter (5.8W/ft)
- Tunable white version available (2200K-4000K)

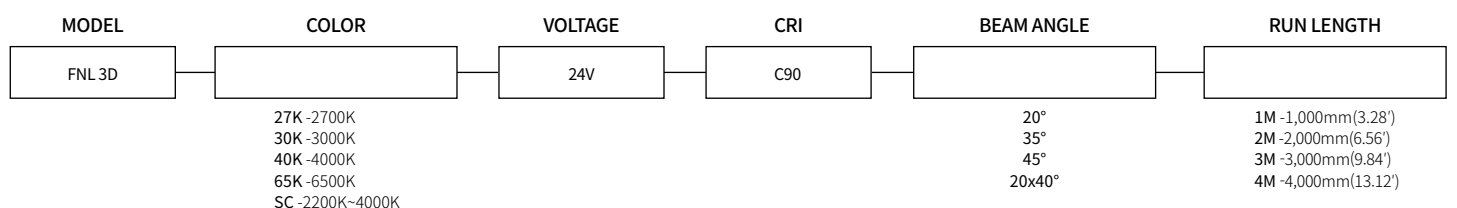
## PRODUCT SPECIFICATIONS

IP Rate	IP67
Lamp Power	19W/m (5.8W/ft)
Power Input	24V DC
Color Rendering	Ra>90
Operating Temperature Ranges	-20°C to 40°C (-4°F to 104°F)
Maximum Length	4,000mm (13.12')
Minimum Length	91.4mm (3.6")
Minimum Bending Diameter	200mm (7.9")
Beam Angle	20°, 35°, 45°, 20°x 40°
Material	Silicone

## SPECIFICATION

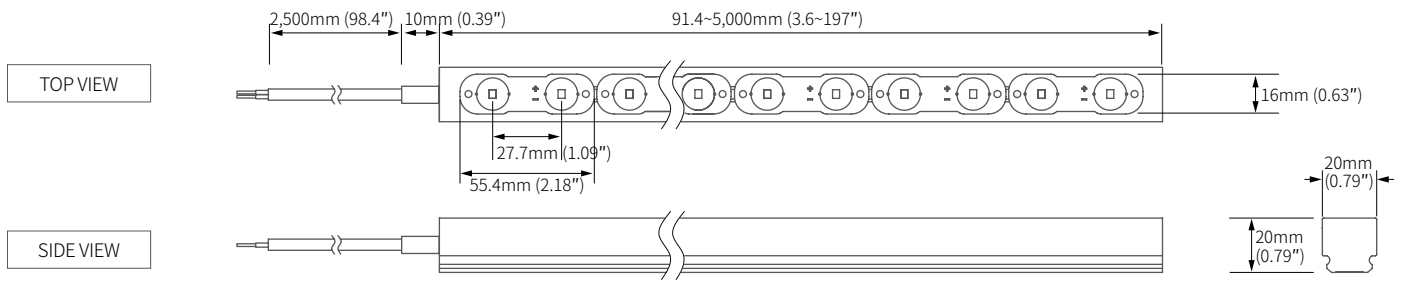
Model Number	Power Input	Lamp Power	Lumen/W	Color Temperature	Color Rendering	Operating Temperature	Beam Angle	Material
FNL 3D 27K-24V-C90	DC 24V	19W/m (5.8W/ft)	75 lm/W	2700K	Ra > 90	-20°C to 40°C (-4°F to 104°F)	20° 35° 45° 20x40°	Silicon
FNL 3D 30K-24V-C90			80 lm/W	3000K				
FNL 3D 40K-24V-C90			85 lm/W	4000K				
FNL 3D 65K-24V-C90			84 lm/W	6500K				
FNL 3D SC-24V-C90			75 lm/W	2200-4000K				

## SPECIFICATION GUIDE

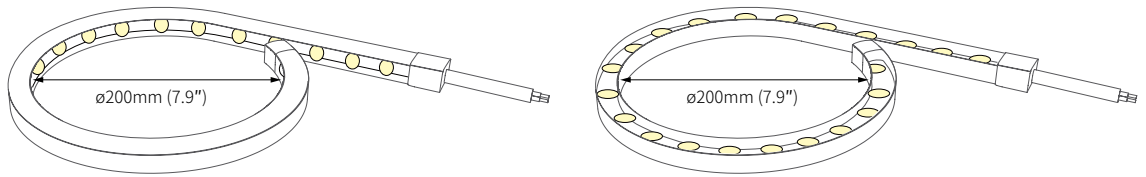


## DIMENSIONS

Available in Standard Lengths of 1, 2, 3, 4, 5M reels

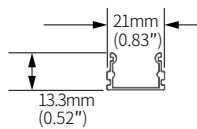


## BENDING DIAMETER

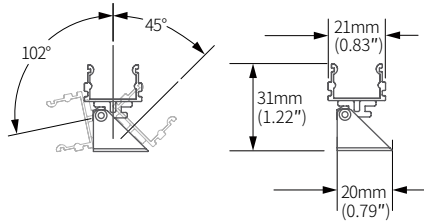


## INSTALLATION

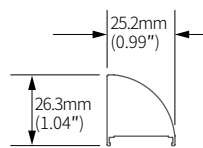
\* Bracket



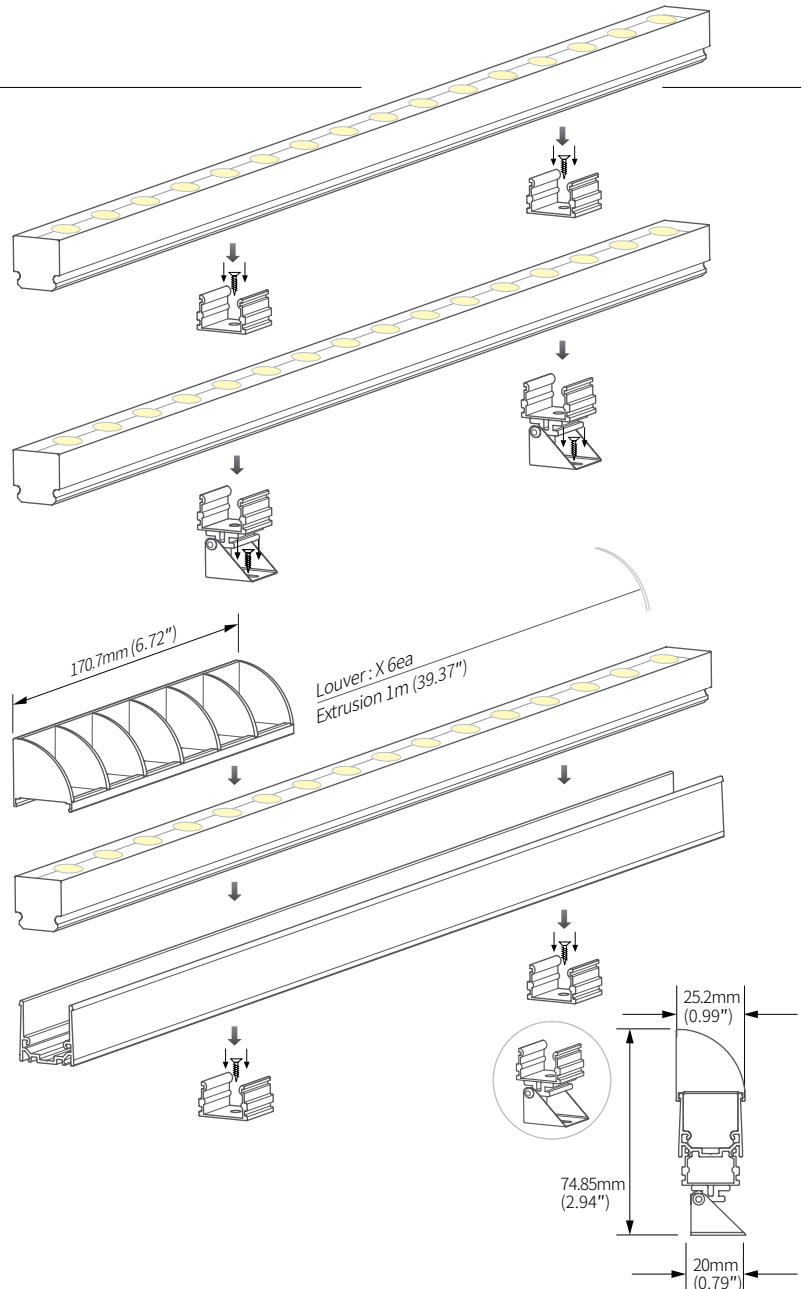
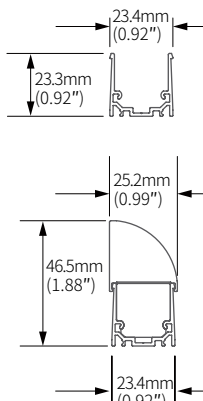
\* Angle Bracket



\* Louver

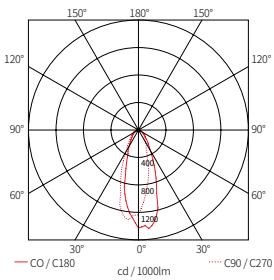


\* Extrusion Line

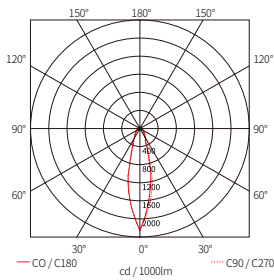


## BEAM SPREADS

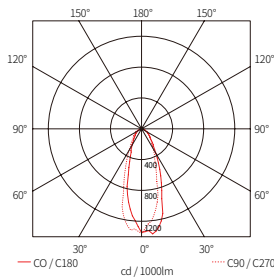
FNL 3D SC-24V-C90-35  
75.3lm/W 1,505lm



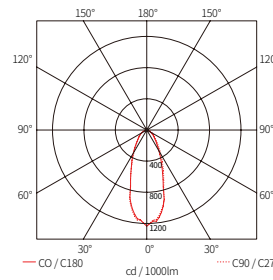
FNL 3D-40K-C90-20  
80.37lm/W 1,505lm



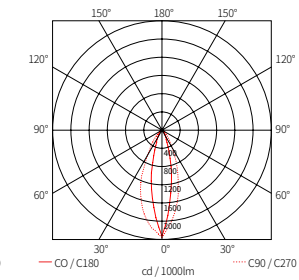
FNL 3D-40K-C90-35  
83.8lm/W 1,521lm



FNL 3D-40K-C90-45  
85.32lm/W 1,541lm



FNL 3D-40K-C90-20X40  
81.28lm/W 1,467lm



## COMPONENTS



### Flexible Neon Lens 3D

- \_\_FNL 3D-(color)K-24V-C90 (1M)
- \_\_FNL 3D-(color)K-24V-C90 (2M)
- \_\_FNL 3D-(color)K-24V-C90 (3M)
- \_\_FNL 3D-(color)K-24V-C90 (4M)



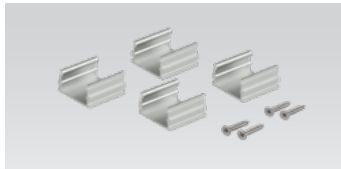
### Flexible Neon Lens 3D Dual

- \_\_FNL 3D-SC-24V-C90 (1M)
- \_\_FNL 3D-SC-24V-C90 (2M)
- \_\_FNL 3D-SC-24V-C90 (3M)
- \_\_FNL 3D-SC-24V-C90 (4M)



### FNL 3D Extrusion Line

- \_\_FNL 3D-EXL (1M)



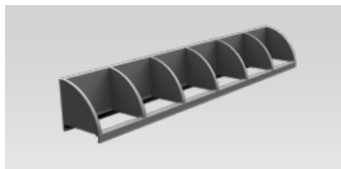
### FNL 3D Mounting Bracket

- \_\_FNL 3D-BRACKET1 (1set = 4pcs)



### FNL 3D Angle Bracket

- \_\_FNL 3D-BRACKET2 (1set = 4pcs)



### FNL 3D Louver

- \_\_FNL 3D-Louwer



### Dimming Interface

- \_\_FDC-L10
- Max. 100W (100W/CH, 1CH) 0-10V Signal



### Dimming Interface

- \_\_FDA-L2MO
- (0-10V/1-10V, DMX512)
- Max. 200W (100W/CH, 2CH)
- \_\_FDA-L5M (DMX512)
- Max. 200W (50W/CH, 5CH)



### Dimming Interface (Dail)

- \_\_FDD-L1DA
- Max. 200W (100W/CH, 1CH)



### Dimming Interface

- \_\_FDD-L20
- (0-10V/1-10V)



### LED Drivers

- \_\_FLC30-24V/T (30W)
- \_\_FLC75-24V/T (75W)
- With distributor and power cord
- 1800mm (6')



### Hard Wire Driver

- \_\_XLAV80(L)-124V-SSB
- \_\_XLD200-224V-FCL-DIM
- \_\_XLD75-124V-FC
- (90V to 300V)



### Hard Wire Driver

- \_\_FLE90-24V-L10-DIM
- Additional Power Supply/
- Driver Options Available.
- Please consult Factory.

A Larger selection of drivers are available including remote and hard wire drivers. Please consult factory.